

R&S® CLG

Cable Load Generator

Release Notes

Version 01.04

© 2012 Rohde & Schwarz GmbH & Co. KG
Muehldorfstr. 15, 81671 Munich, Germany
Phone: +49 89 41 29 - 0
Fax: +49 89 41 29 12 164
E-mail: info@rohde-schwarz.com
Internet: <http://www.rohde-schwarz.com>

Subject to change – Data without tolerance limits is not binding.
R&S® is a registered trademark of Rohde & Schwarz GmbH & Co. KG.
Trade names are trademarks of the owners.

The following abbreviations are used throughout this document:
R&S®CLG is abbreviated as R&S CLG.

Table of Contents

1	Information on the Current Version and History	3
1.1	Version 01.04.....	3
1.2	Version 01.03.....	4
1.3	Version 01.02.....	4
2	Modifications to the Documentation	6
3	Firmware Update	7
3.1	Update Information	7
3.2	Standalone Update	7
3.3	Updating the Firmware	9
4	License Installation for Encrypted Waveforms	14
5	Open Source Acknowledgement	16
6	Customer Support	22

1 Information on the Current Version and History

1.1 Version 01.04

Firmware package contents

- Software version (SVN) 1544

New Functionality

- Ability to use encrypted wave files added. For details see chapter 4.

Modified Functionality

- Hum frequency upper limit changed to 200 Hz.

Fixed Issues

- Occasionally, upon start up, the unit does not initialize the on-board frequency reference properly.

Known Issues

- On rare occasions, R&S CLG crashes when uploading ARB or configuration files. If it crashes, power cycle the R&S CLG and redo the upload.
- Web GUI is very slow under IE8 and old versions of Firefox (3.x and earlier). Recommend browsers are IE9, Firefox 8.x or newer, or Chrome.
- TX mode changes can cause timeout errors on SNMP.
- If using the Web GUI to monitor and control the R&S CLG: The only way to clear an amber status LED that has been activated by an error logged in the system error queue is to issue a SCPI command to clear the error queue or to issue SNMP reads on the error number OID.
- Setting a static IP address using the GUI may report an error regarding the base port number.

1.2 Version 01.03

Firmware package contents

- Software version (SVN) 1498

New Functionality

- Modulation according to ITU J.83 Annex C provided.
- Windows updater support added.
- Mechanism to reset the IP address to factory default added.

Modified Functionality

- Data network base port is now only available on the network page.
- Drag to select function disabled on channel page of Web GUI if Firefox is used as a browser.

Known Issues

- On rare occasions, R&S CLG crashes when uploading ARB or configuration files. If it crashes, power cycle the R&S CLG and redo the upload.
- Web GUI is very slow under IE8 and old versions of Firefox (3.x and earlier). Recommend browsers are IE9, Firefox 8.x or newer, or Chrome.
- TX mode changes can cause timeout errors on SNMP.
- If using the Web GUI to monitor and control the R&S CLG: The only way to clear an amber status LED that has been activated by an error logged in the system error queue is to issue a SCPI command to clear the error queue or to issue SNMP reads on the error number OID.
- Setting a static IP address using the GUI may report an error regarding the base port number.

1.3 Version 01.02

Firmware package contents

- Software version (SVN) 1425

New Functionality

- Support for remote control (SCPI and SNMP).

Modified Functionality

- None

Fixed Issues

- When in DHCP mode, the gateway field on the Network Settings page indicates 'Unknown' and may display an error message 'Invalid IP address'.
Note: R&S CLG functions properly in DHCP mode.
- Could not access user manuals using Internet Explorer 8.

Known Issues

- On rare occasions, R&S CLG crashes when uploading ARB or configuration files. If it crashes, power cycle the R&S CLG and redo the upload.
- Web GUI is very slow under IE8 and old versions of Firefox (3.x and earlier). Recommend browsers are IE9, Firefox 8.x or newer, or Chrome.
- TX mode changes can cause timeout errors on SNMP.
- If using the Web GUI to monitor and control the R&S CLG: The only way to clear an amber status LED that has been activated by an error logged in the system error queue is to issue a SCPI command to clear the error queue or to issue SNMP reads on the error number OID.

2 Modifications to the Documentation

Upper limit of hum frequency changed.

Screenshots of the status page show licensing information.

3 Firmware Update

3.1 Update Information

Two different methods of updating the R&S CLG firmware are used depending on the version of firmware installed on the R&S CLG. The revision level of the R&S CLG can be determined by using the web GUI and clicking on the status menu item. For more information see the Getting Started Document.

If the SVN version is less than 1498, the standalone updater must be used. The standalone updater will install version 1498. For details see chapter 3.2.

One of the main features added to the 1498 version is the ability to use the win-updater. Once version 1498 is installed, the win-updater can be used to bring the R&S CLG up to date. For details see chapter 3.3.

3.2 Standalone Update

The standalone update consists of an update application and a compressed firmware image. The standalone updater is a complete update package that runs on a 32 bit Windows XP computer. It may run on other versions of Windows but has not been tested with them. Once the update application has been started, do not remove power from the R&S CLG or close the update application window or the R&S CLG may be rendered unresponsive.

1. Power cycle the R&S CLG and ensure that there are no web GUI clients connected. Wait 120 seconds to ensure the R&S CLG is fully powered up and ready to accept the upgrade.
2. It is recommended that a cross over cable be connected directly between the R&S CLG and the computer running the upgrade application. However, as long as the computer can access the R&S CLG over the network, this upgrade application can be used. If only the R&S CLG hostname is known, then use the 'ping' command to determine the IP address.
3. Ensure the update application files are in the same folder (*clg_upgrade_1498.exe* and *upgrade.RS_CLG.tar*).
4. It is recommended that all firewall applications be closed before beginning the upgrade. The upgrade application uses a randomly selected TCP port to upload the firmware to the R&S CLG. If a firewall exception pop-up is generated when the upgrade application is executed, select 'Unblock' to allow the upgrade to proceed.

- Execute `clg_upgrade_1498.exe`. Windows will likely not recognize the application publisher (a similar warning is shown below) – this is normal, select 'Run' to begin the upgrade.



This will create a terminal window requesting the IP address of the R&S CLG. If the IP address is entered correctly, the application will begin the upgrade. The following graphic shows the initial portion of the upgrade application's output.

```

Please enter the IP address or hostname of the R&S CLG: 192.168.175.253
-----
Is 192.168.175.253 correct (y/N): y
Target = 192.168.175.253
Extracting \\172.31.1.24\sedcom\USERS\GALEM\hd_gam\upgrade.RS_CLG.tar to c:\docu
me~1\pare\locals~1\temp\mpglw11y
rm -rf /extract_archive.sh
-----
Extraction script uploaded successfully...
Making the extraction script executable...
Extraction script is now executable...
-----
Tar found...
-----
Releasing memory...
-----
Uploading Ramdisk file...
192.168.175.253 -- [11/Jun/2012 11:41:02] "GET /uRamdisk HTTP/1.1" 200 -
File uRamdisk uploaded successfully
Output:
Error: Connecting to 192.107.131.47:1903 <192.107.131.47:1903>
-----
Installing Ramdisk 1...
-- Output --
Erasing 128 Kibyte @ 900000 -- 100 % complete.
-----
Installing Ramdisk 2...
-- Output --
Erasing 128 Kibyte @ 900000 -- 100 % complete.
-----
Removing uRamdisk...
-----
Uploading uImage...
192.168.175.253 -- [11/Jun/2012 11:41:14] "GET /uImage HTTP/1.1" 200 -
File uImage uploaded successfully
Output:
Error: Connecting to 192.107.131.47:1903 <192.107.131.47:1903>
-----
Installing Kernel 1...
-- Output --
Erasing 128 Kibyte @ 300000 -- 100 % complete.

```


The following graphic shows the last portion of the upgrade applications output. Note that the number of *upgrade_segment.tar-XXX* may be different. This shows the installation is complete, and pressing enter at this point will terminate the application.

```
192.168.175.253 - - [11/Jun/2012 12:06:32] "GET //upgrade_segment.tar-157 HTTP/1.1" 200 -
192.168.175.253 - - [11/Jun/2012 12:06:40] "GET //upgrade_segment.tar-158 HTTP/1.1" 200 -
192.168.175.253 - - [11/Jun/2012 12:06:49] "GET //upgrade_segment.tar-159 HTTP/1.1" 200 -
192.168.175.253 - - [11/Jun/2012 12:06:56] "GET //upgrade_segment.tar-160 HTTP/1.1" 200 -
192.168.175.253 - - [11/Jun/2012 12:07:03] "GET //upgrade_segment.tar-161 HTTP/1.1" 200 -
[]

-----
192.168.175.253 - - [11/Jun/2012 12:07:08] "GET /post_install.sh HTTP/1.1" 200 -
File post_install.sh uploaded successfully
Making post_install.sh executable...

Output:
Error:
-----
Running post_install.sh...

Output:
Error:
-----
Removing post_install.sh...

Output:
Error:
-----
Installation complete!
... Press Enter to end ...
```

3.3 Updating the Firmware

The firmware update consists of one file. The version number in the file name varies with each update (symbolized by placeholder x).

- *CLG_Setup_FW_xxxx.exe*

Perform the update on a computer under control of the Windows operating system.

1. Make sure that the computer and the R&S CLG are connected by LAN.
2. Switch on the R&S CLG.
3. Wait until the R&S CLG firmware has booted and the application has started.

4. On the computer, execute *CLG_Setup_FW_xxxx.exe*.
The "R&S Software Distributor" is displayed. Only "Remote Installation" is available.

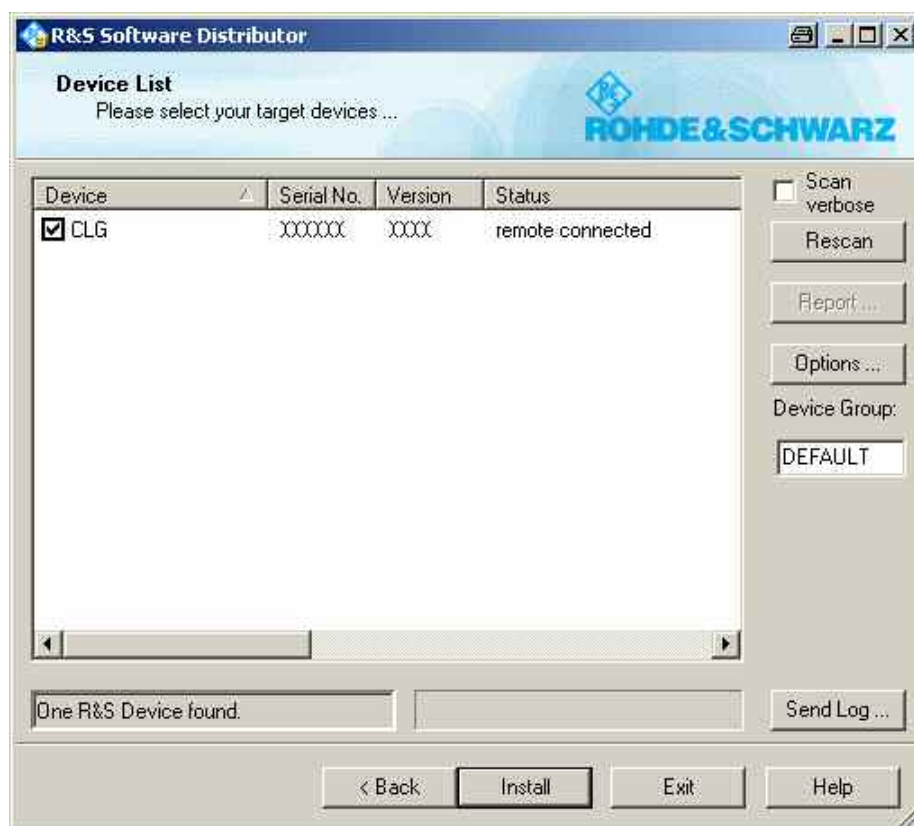


5. Click "Next>".
By default, "Step 8" is selected. Do not change the selection.



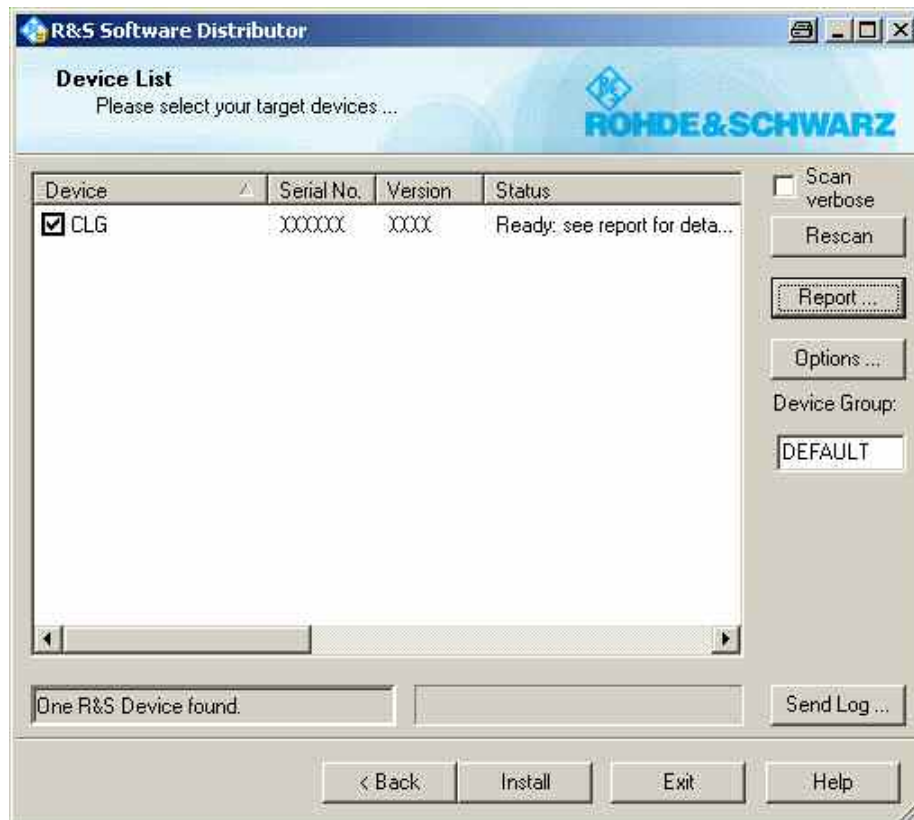
6. Click "Next>".
All detected R&S CLGs are displayed.

7. Select the R&S CLG(s) you want to update.
Note: You can update several R&S CLGs simultaneously.

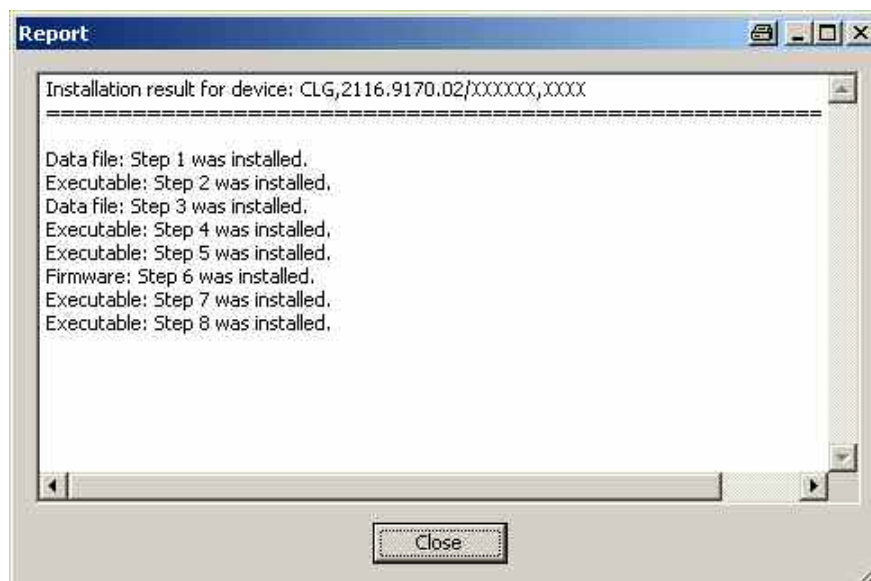


8. If no R&S CLG is automatically detected, expand the search:
 - a. Click "Options".
 - b. Click "Add URL".
 - c. Enter one or several R&S CLG URL(s), e.g. 192.168.10.1, to be included in the search.
 - d. To save the search address(es), click "Save Options". If you do not save the options, the added search addresses are only used for the current installation.

- Click "Install".
The installation process itself is self-explanatory.
After the installation, the "Status" is changed to "Ready".



- Click "Report" to view the installation report. If the installation was successful, no errors are displayed (see example below).



- Close the report and click "Exit".

4 License Installation for Encrypted Waveforms

The encrypted waveform functionality provides the ability to play waveform files that are encrypted. Libraries of these files are available for purchase. To use these files, a license file is provided. This license file must be uploaded to the R&S CLG (see ["Uploading a New License File"](#)).

Unencrypted waveforms are not affected by the encrypted waveform functionality. They look and function unchanged.

Under "Files on device" in the Configurations/ARB screen of the Web GUI, icons indicate if waveforms are encrypted.

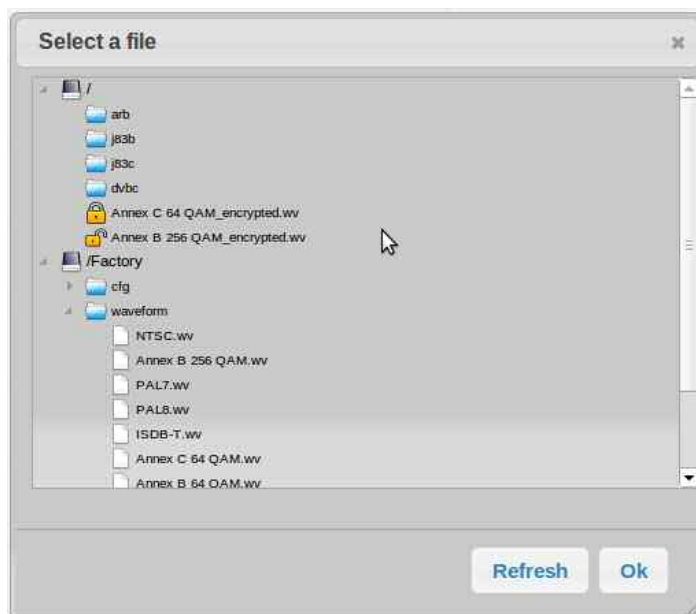


The locked icon indicates that the waveform is encrypted, and the R&S CLG does not have the license file necessary to decrypt it.



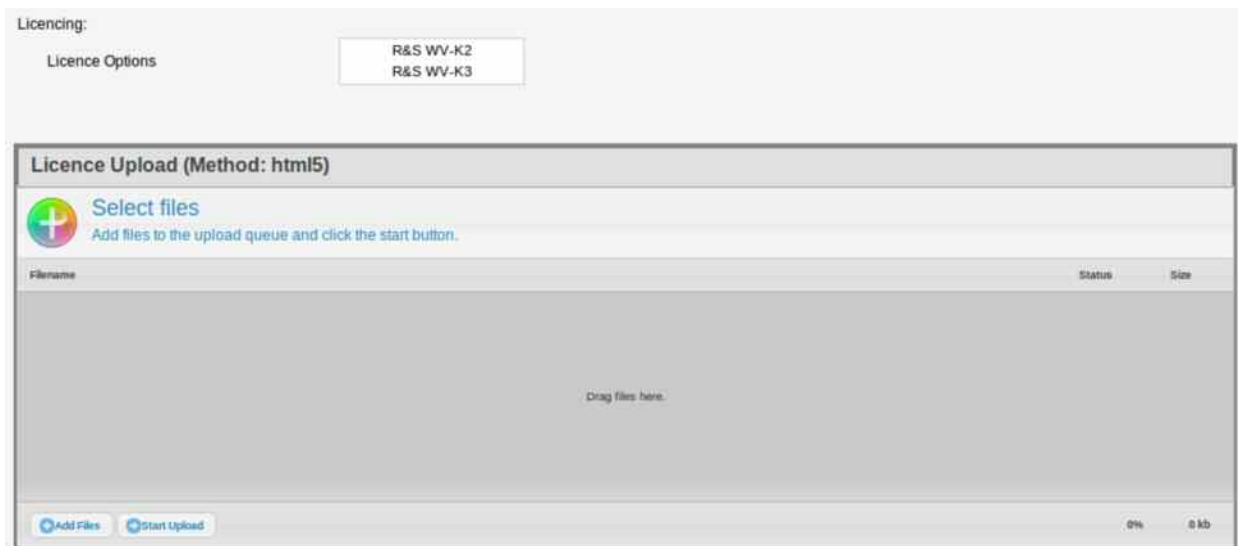
The unlocked icon indicates that the waveform is encrypted but the R&S CLG does have the license file necessary to decrypt it.

The locked/unlocked icons are also displayed in the "Select a file" pop-up window on the Block Settings screen if the AWG file field is selected. If the file is unlocked, you can select it to be loaded. If it is locked, it cannot be loaded.



A license file is required in order to decrypt the encrypted waveforms. Once a license file is supplied, it can be uploaded on the Unit Status screen of the Web GUI.

At the bottom of the Unit Status screen is a field called "Licence Options" and a file upload box called "Licence Upload". The "Licence Options" field shows the current licensing options that are available on the R&S CLG. If no licenses are uploaded, it displays "No Licence Files Uploaded".



Uploading a New License File

1. Take control of the R&S CLG in the Web GUI.
2. Navigate to the Unit Status screen.
3. At the bottom of the "Licence Upload" box, click "Add Files", or drag the license file into the "Licence Upload" box.
4. At the bottom of the "Licence Upload" box, click "Start Upload".

The file is uploaded to the R&S CLG. When the upload is completed, the new license option is added to the "Licence Options" field. All encrypted waveforms corresponding to the license option are available to be used.

5 Open Source Acknowledgement

This instrument firmware makes use of valuable open source software packages. The most important of them are listed below together with their corresponding open source license. The verbatim license texts are provided in the following chapters.

Package	Link	License
Linux	http://www.kernel.org	GPL Version 2
busybox	http://www.busybox.net	GPL Version 2
u-boot	http://www.denx.de/wiki/U-Boot/WebHome	GPL Version 2
OpenSSL	http://www.openssl.org	OpenSSL License

This product includes cryptographic software written by Eric Young (eay@cryptsoft.com) and software written by Tim Hudson (tjh@cryptsoft.com).

Rohde & Schwarz would like to thank the open source community for their valuable contribution to embedded computing. The source code of the open source packages is available on request.

GNU GENERAL PUBLIC LICENSE

Version 2, June 1991

Copyright (C) 1989, 1991 Free Software Foundation, Inc.
675 Mass Ave, Cambridge, MA 02139, USA

Everyone is permitted to copy and distribute verbatim copies of this license document, but changing it is not allowed.

Preamble

The licenses for most software are designed to take away your freedom to share and change it. By contrast, the GNU General Public License is intended to guarantee your freedom to share and change free software—to make sure the software is free for all its users. This General Public License applies to most of the Free Software Foundation's software and to any other program whose authors commit to using it. (Some other Free Software Foundation software is covered by the GNU Library General Public License instead.) You can apply it to your programs, too.

When we speak of free software, we are referring to freedom, not price. Our General Public Licenses are designed to make sure that you have the freedom to distribute copies of free software (and charge for this service if you wish), that you receive source code or can get it if you want it, that you can change the software or use pieces of it in new free programs; and that you know you can do these things.

To protect your rights, we need to make restrictions that forbid anyone to deny you these rights or to ask you to surrender the rights. These restrictions translate to certain responsibilities for you if you distribute copies of the software, or if you modify it.

For example, if you distribute copies of such a program, whether gratis or for a fee, you must give the recipients all the rights that you have. You must make sure that they, too, receive or can get the source code. And you must show them these terms so they know their rights.

We protect your rights with two steps: (1) copyright the software, and (2) offer you this license which gives you legal permission to copy, distribute and/or modify the software.

Also, for each author's protection and ours, we want to make certain that everyone understands that there is no warranty for this free software. If the software is modified by someone else and passed on, we want its recipients to know that what they have is not the original, so that any problems introduced by others will not reflect on the original authors' reputations.

Finally, any free program is threatened constantly by software patents. We wish to avoid the danger that redistributors of a free program will individually obtain patent licenses, in effect making the program proprietary. To prevent this, we have made it clear that any patent must be licensed for everyone's free use or not licensed at all.

The precise terms and conditions for copying, distribution and modification follow.

GNU GENERAL PUBLIC LICENSE TERMS AND CONDITIONS FOR COPYING, DISTRIBUTION AND MODIFICATION

0. This License applies to any program or other work which contains a notice placed by the copyright holder saying it may be distributed under the terms of this General Public License. The "Program", below, refers to any such program or work, and a "work based on the Program" means either the Program or any derivative work under copyright law: that is to say, a work containing the Program or a portion of it, either verbatim or with modifications and/or translated into another language. (Hereinafter, translation is included without limitation in the term "modification".) Each licensee is addressed as "you".

Activities other than copying, distribution and modification are not covered by this License; they are outside its scope. The act of running the Program is not restricted, and the output from the Program is covered only if its contents constitute a work based on the Program (independent of having been made by running the Program). Whether that is true depends on what the Program does.

1. You may copy and distribute verbatim copies of the Program's source code as you receive it, in any medium, provided that you conspicuously and appropriately publish on each copy an appropriate copyright notice and disclaimer of warranty; keep intact all the notices that refer to this License and to the absence of any warranty; and give any other recipients of the Program a copy of this License along with the Program.

You may charge a fee for the physical act of transferring a copy, and you may at your option offer warranty protection in exchange for a fee.

2. You may modify your copy or copies of the Program or any portion of it, thus forming a work based on the Program, and copy and distribute such modifications or work under the terms of Section 1 above, provided that you also meet all of these conditions:

- a) You must cause the modified files to carry prominent notices stating that you changed the files and the date of any change.
- b) You must cause any work that you distribute or publish, that in whole or in part contains or is derived from the Program or any part thereof, to be licensed as a whole at no charge to all third parties under the terms of this License.
- c) If the modified program normally reads commands interactively when run, you must cause it, when started running for such interactive use in the most ordinary way, to print or display an announcement including an appropriate copyright notice and a notice that there is no warranty (or else, saying that you provide a warranty) and that users may redistribute the program under these conditions, and telling the user how to view a copy of this License. (Exception: if the Program itself is interactive but does not normally print such an announcement, your work based on the Program is not required to print an announcement.)

These requirements apply to the modified work as a whole. If identifiable sections of that work are not derived from the Program, and can be reasonably considered independent and separate works in themselves, then this License, and its terms, do not apply to those sections when you distribute them as separate works. But when you distribute the same sections as part of a whole which is a work based on the Program, the distribution of the whole must be on the terms of this License, whose permissions for other licensees extend to the entire whole, and thus to each and every part regardless of who wrote it.

Thus, it is not the intent of this section to claim rights or contest your rights to work written entirely by you; rather, the intent is to exercise the right to control the distribution of derivative or collective works based on the Program.

In addition, mere aggregation of another work not based on the Program with the Program (or with a work based on the Program) on a volume of a storage or distribution medium does not bring the other work under the scope of this License.

3. You may copy and distribute the Program (or a work based on it, under Section 2) in object code or executable form under the terms of Sections 1 and 2 above provided that you also do one of the following:

- a) Accompany it with the complete corresponding machine-readable source code, which must be distributed under the terms of Sections 1 and 2 above on a medium customarily used for software interchange; or,

b) Accompany it with a written offer, valid for at least three years, to give any third party, for a charge no more than your cost of physically performing source distribution, a complete machine-readable copy of the corresponding source code, to be distributed under the terms of Sections 1 and 2 above on a medium customarily used for software interchange; or,

c) Accompany it with the information you received as to the offer to distribute corresponding source code. (This alternative is allowed only for noncommercial distribution and only if you received the program in object code or executable form with such an offer, in accord with Subsection b above.)

The source code for a work means the preferred form of the work for making modifications to it. For an executable work, complete source code means all the source code for all modules it contains, plus any associated interface definition files, plus the scripts used to control compilation and installation of the executable. However, as a special exception, the source code distributed need not include anything that is normally distributed (in either source or binary form) with the major components (compiler, kernel, and so on) of the operating system on which the executable runs, unless that component itself accompanies the executable.

If distribution of executable or object code is made by offering access to copy from a designated place, then offering equivalent access to copy the source code from the same place counts as distribution of the source code, even though third parties are not compelled to copy the source along with the object code.

4. You may not copy, modify, sublicense, or distribute the Program except as expressly provided under this License. Any attempt otherwise to copy, modify, sublicense or distribute the Program is void, and will automatically terminate your rights under this License. However, parties who have received copies, or rights, from you under this License will not have their licenses terminated so long as such parties remain in full compliance.

5. You are not required to accept this License, since you have not signed it. However, nothing else grants you permission to modify or distribute the Program or its derivative works. These actions are prohibited by law if you do not accept this License. Therefore, by modifying or distributing the Program (or any work based on the Program), you indicate your acceptance of this License to do so, and all its terms and conditions for copying, distributing or modifying the Program or works based on it.

6. Each time you redistribute the Program (or any work based on the Program), the recipient automatically receives a license from the original licensor to copy, distribute or modify the Program subject to these terms and conditions. You may not impose any further restrictions on the recipients' exercise of the rights granted herein. You are not responsible for enforcing compliance by third parties to this License.

7. If, as a consequence of a court judgment or allegation of patent infringement or for any other reason (not limited to patent issues), conditions are imposed on you (whether by court order, agreement or otherwise) that contradict the conditions of this License, they do not excuse you from the conditions of this License. If you cannot distribute so as to satisfy simultaneously your obligations under this License and any other pertinent obligations, then as a consequence you may not distribute the Program at all. For example, if a patent license would not permit royalty-free redistribution of the Program by all those who receive copies directly or indirectly through you, then the only way you could satisfy both it and this License would be to refrain entirely from distribution of the Program.

If any portion of this section is held invalid or unenforceable under any particular circumstance, the balance of the section is intended to apply and the section as a whole is intended to apply in other circumstances.

It is not the purpose of this section to induce you to infringe any patents or other property right claims or to contest validity of any such claims; this section has the sole purpose of protecting the integrity of the free software distribution system, which is implemented by public license practices. Many people have made generous contributions to the wide range of software distributed through that system in reliance on consistent application of that system; it is up to the author/donor to decide if he or she is willing to distribute software through any other system and a licensee cannot impose that choice.

This section is intended to make thoroughly clear what is believed to be a consequence of the rest of this License.

8. If the distribution and/or use of the Program is restricted in certain countries either by patents or by copyrighted interfaces, the original copyright holder who places the Program under this License may add an explicit geographical distribution limitation excluding those countries, so that distribution is permitted only in or among countries not thus excluded. In such case, this License incorporates the limitation as if written in the body of this License.

9. The Free Software Foundation may publish revised and/or new versions of the General Public License from time to time. Such new versions will be similar in spirit to the present version, but may differ in detail to address new problems or concerns.

Each version is given a distinguishing version number. If the Program specifies a version number of this License which applies to it and "any later version", you have the option of following the terms and conditions either of that version or of any later version published by the Free Software Foundation. If the Program does not specify a version number of this License, you may choose any version ever published by the Free Software Foundation.

10. If you wish to incorporate parts of the Program into other free programs whose distribution conditions are different, write to the author to ask for permission. For software which is copyrighted by the Free Software Foundation, write to the Free Software Foundation; we sometimes make exceptions for this. Our decision will be guided by the two goals of preserving the free status of all derivatives of our free software and of promoting the sharing and reuse of software generally.

NO WARRANTY

11. BECAUSE THE PROGRAM IS LICENSED FREE OF CHARGE, THERE IS NO WARRANTY FOR THE PROGRAM, TO THE EXTENT PERMITTED BY APPLICABLE LAW. EXCEPT WHEN OTHERWISE STATED IN WRITING THE COPYRIGHT HOLDERS AND/OR OTHER PARTIES PROVIDE THE PROGRAM "AS IS" WITHOUT WARRANTY OF ANY KIND, EITHER EXPRESSED OR IMPLIED, INCLUDING, BUT NOT LIMITED TO, THE IMPLIED WARRANTIES OF MERCHANTABILITY AND FITNESS FOR A PARTICULAR PURPOSE. THE ENTIRE RISK AS TO THE QUALITY AND PERFORMANCE OF THE PROGRAM IS WITH YOU. SHOULD THE PROGRAM PROVE DEFECTIVE, YOU ASSUME THE COST OF ALL NECESSARY SERVICING, REPAIR OR CORRECTION.

12. IN NO EVENT UNLESS REQUIRED BY APPLICABLE LAW OR AGREED TO IN WRITING WILL ANY COPYRIGHT HOLDER, OR ANY OTHER PARTY WHO MAY MODIFY AND/OR REDISTRIBUTE THE PROGRAM AS PERMITTED ABOVE, BE LIABLE TO YOU FOR DAMAGES, INCLUDING ANY GENERAL, SPECIAL, INCIDENTAL OR CONSEQUENTIAL DAMAGES ARISING OUT OF THE USE OR INABILITY TO USE THE PROGRAM (INCLUDING BUT NOT LIMITED TO LOSS OF DATA OR DATA BEING RENDERED INACCURATE OR LOSSES SUSTAINED BY YOU OR THIRD PARTIES OR A FAILURE OF THE PROGRAM TO OPERATE WITH ANY OTHER PROGRAMS), EVEN IF SUCH HOLDER OR OTHER PARTY HAS BEEN ADVISED OF THE POSSIBILITY OF SUCH DAMAGES.

END OF TERMS AND CONDITIONS

OpenSSL/SSLeay

LICENSE ISSUES
=====

The OpenSSL toolkit stays under a dual license, i.e. both the conditions of the OpenSSL License and the original SSLeay license apply to the toolkit. See below for the actual license texts. Actually both licenses are BSD-style Open Source licenses. In case of any license issues related to OpenSSL please contact openssl-core@openssl.org.

OpenSSL License

```
/* =====
 * Copyright (c) 1998-2007 The OpenSSL Project. All rights reserved.
 *
 * Redistribution and use in source and binary forms, with or without
 * modification, are permitted provided that the following conditions
 * are met:
 *
 * 1. Redistributions of source code must retain the above copyright
 * notice, this list of conditions and the following disclaimer.
 *
 * 2. Redistributions in binary form must reproduce the above copyright
 * notice, this list of conditions and the following disclaimer in
 * the documentation and/or other materials provided with the
 * distribution.
 *
 * 3. All advertising materials mentioning features or use of this
 * software must display the following acknowledgment:
 * "This product includes software developed by the OpenSSL Project
 * for use in the OpenSSL Toolkit. (http://www.openssl.org/)"
 *
 *

```

* 4. The names "OpenSSL Toolkit" and "OpenSSL Project" must not be used to
 * endorse or promote products derived from this software without
 * prior written permission. For written permission, please contact
 * openssl-core@openssl.org.

* 5. Products derived from this software may not be called "OpenSSL"
 * nor may "OpenSSL" appear in their names without prior written
 * permission of the OpenSSL Project.

* 6. Redistributions of any form whatsoever must retain the following
 * acknowledgment:
 * "This product includes software developed by the OpenSSL Project
 * for use in the OpenSSL Toolkit (<http://www.openssl.org/>)"

* THIS SOFTWARE IS PROVIDED BY THE OpenSSL PROJECT ``AS IS'' AND ANY
 * EXPRESSED OR IMPLIED WARRANTIES, INCLUDING, BUT NOT LIMITED TO, THE
 * IMPLIED WARRANTIES OF MERCHANTABILITY AND FITNESS FOR A PARTICULAR
 * PURPOSE ARE DISCLAIMED. IN NO EVENT SHALL THE OpenSSL PROJECT OR
 * ITS CONTRIBUTORS BE LIABLE FOR ANY DIRECT, INDIRECT, INCIDENTAL,
 * SPECIAL, EXEMPLARY, OR CONSEQUENTIAL DAMAGES (INCLUDING, BUT
 * NOT LIMITED TO, PROCUREMENT OF SUBSTITUTE GOODS OR SERVICES;
 * LOSS OF USE, DATA, OR PROFITS; OR BUSINESS INTERRUPTION)
 * HOWEVER CAUSED AND ON ANY THEORY OF LIABILITY, WHETHER IN CONTRACT,
 * STRICT LIABILITY, OR TORT (INCLUDING NEGLIGENCE OR OTHERWISE)
 * ARISING IN ANY WAY OUT OF THE USE OF THIS SOFTWARE, EVEN IF ADVISED
 * OF THE POSSIBILITY OF SUCH DAMAGE.

* =====

* This product includes cryptographic software written by Eric Young
 * (eay@cryptsoft.com). This product includes software written by Tim
 * Hudson (tjh@cryptsoft.com).

*/

Original SSLeay License

/* Copyright (C) 1995-1998 Eric Young (eay@cryptsoft.com)

* All rights reserved.

* This package is an SSL implementation written

* by Eric Young (eay@cryptsoft.com).

* The implementation was written so as to conform with Netscapes SSL.

* This library is free for commercial and non-commercial use as long as
 * the following conditions are aheared to. The following conditions
 * apply to all code found in this distribution, be it the RC4, RSA,
 * lhash, DES, etc., code; not just the SSL code. The SSL documentation
 * included with this distribution is covered by the same copyright terms
 * except that the holder is Tim Hudson (tjh@cryptsoft.com).

* Copyright remains Eric Young's, and as such any Copyright notices in
 * the code are not to be removed.

* If this package is used in a product, Eric Young should be given
 * attribution as the author of the parts of the library used.

* This can be in the form of a textual message at program startup or
 * in documentation (online or textual) provided with the package.

* Redistribution and use in source and binary forms, with or without
 * modification, are permitted provided that the following conditions
 * are met:

- * 1. Redistributions of source code must retain the copyright
 * notice, this list of conditions and the following disclaimer.
- * 2. Redistributions in binary form must reproduce the above copyright
 * notice, this list of conditions and the following disclaimer in the
 * documentation and/or other materials provided with the distribution.
- * 3. All advertising materials mentioning features or use of this software
 * must display the following acknowledgement:
 * "This product includes cryptographic software written by

```
* Eric Young (eay@cryptsoft.com)"
* The word 'cryptographic' can be left out if the routines from the
* library being used are not cryptographic related :-).
* 4. If you include any Windows specific code (or a derivative thereof)
* from the apps directory (application code) you must include an
* acknowledgement:
* "This product includes software written by
* Tim Hudson (tjh@cryptsoft.com)"
*
* THIS SOFTWARE IS PROVIDED BY ERIC YOUNG ``AS IS" AND
* ANY EXPRESS OR IMPLIED WARRANTIES, INCLUDING, BUT NOT LIMITED TO, THE
* IMPLIED WARRANTIES OF MERCHANTABILITY AND FITNESS FOR A PARTICULAR
* PURPOSE ARE DISCLAIMED. IN NO EVENT SHALL THE AUTHOR OR CONTRIBUTORS BE
* LIABLE FOR ANY DIRECT, INDIRECT, INCIDENTAL, SPECIAL, EXEMPLARY, OR
* CONSEQUENTIAL DAMAGES (INCLUDING, BUT NOT LIMITED TO, PROCUREMENT OF
* SUBSTITUTE GOODS OR SERVICES; LOSS OF USE, DATA, OR PROFITS; OR BUSINESS
* INTERRUPTION)
* HOWEVER CAUSED AND ON ANY THEORY OF LIABILITY, WHETHER IN CONTRACT,
* STRICT LIABILITY, OR TORT (INCLUDING NEGLIGENCE OR OTHERWISE) ARISING
* IN ANY WAY OUT OF THE USE OF THIS SOFTWARE, EVEN IF ADVISED OF THE
* POSSIBILITY OF SUCH DAMAGE.
*
* The licence and distribution terms for any publically available version
* or derivative of this code cannot be changed. i.e. this code cannot
* simply be copied and put under another distribution licence
* [including the GNU Public Licence.]
*/
```

6 Customer Support

Technical support – where and when you need it

For quick, expert help with any Rohde & Schwarz equipment, contact one of our Customer Support Centers. A team of highly qualified engineers provides telephone support and will work with you to find a solution to your query on any aspect of the operation, programming or applications of Rohde & Schwarz equipment.

Up-to-date information and upgrades

To keep your instrument up-to-date and to be informed about new application notes related to your instrument, please send an e-mail to the Customer Support Center stating your instrument and your wish. We will take care that you will get the right information.

Europe, Africa, Middle East

Phone +49 89 4129 12345
customersupport@rohde-schwarz.com

North America

Phone 1-888-TEST-RSA (1-888-837-8772)
customer.support@rsa.rohde-schwarz.com

Latin America

Phone +1-410-910-7988
customersupport.la@rohde-schwarz.com

Asia/Pacific

Phone +65 65 13 04 88
customersupport.asia@rohde-schwarz.com